

*Lifts for
service afloat*



A RECORD OF SMS SHIP LIFTS

Robinson

SHIP LIFTS




Smith, Major & Stevens Ltd.
LONDON AND NORTHAMPTON.

— **Since 1770** —



Entrance to Lloyd's—the Home of Shipping.
S.M.S. Lifts are installed throughout.

Lifts for service afloat

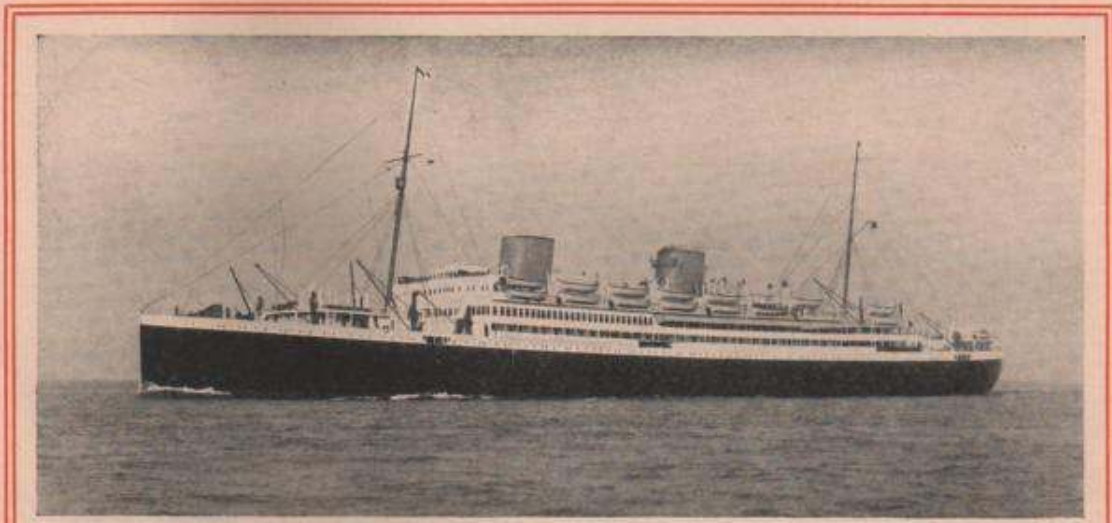


IN dealing with any subject appertaining to ships, it is practically certain that, sooner or later, some reference will have to be made to Lloyd's—that world-renowned organisation wherein are kept records of the comings and goings of all the vessels which traverse the seven seas. It appears to us to be quite fitting and not at all incompatible with the purpose of this brochure that the frontispiece shows, not a ship, but the entrance to Lloyd's new home.

SMS

As is generally known, His Majesty the King recently opened Lloyd's New Building in Leadenhall Street, London. During his inspection of this magnificent addition to London's architecture, His Majesty made

several journeys by means of the lifts installed. All the lifts which serve Lloyd's are S.M.S. Lifts. They were specified by Sir Edwin Cooper when he designed this fine structure. In all 22 S.M.S. Lifts are installed, and every load-carrying requirement is met by their aid. There are S.M.S. Lifts for Passengers, Goods, Books,



M. V. ASTURIAS.

Seven S.M.S. Ship Lifts are installed on this well-known motor-driven vessel.

[Photograph by Beken & Son, Cowes, I.W.]

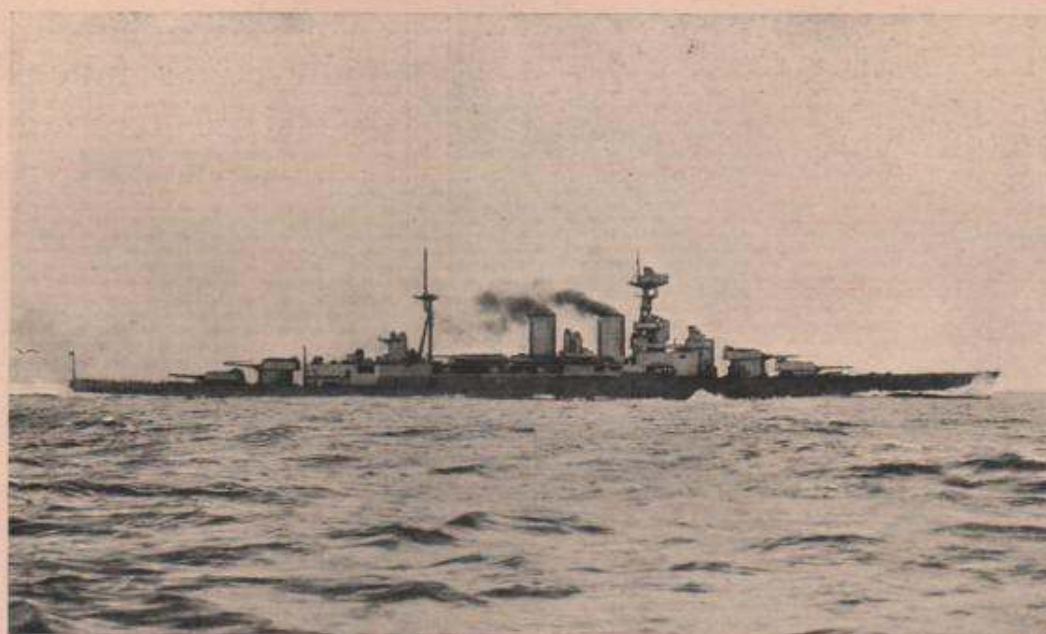
etc., and each and every one plays its part in making things go smoothly in an exceedingly busy building.

Dealing more specifically with S.M.S. Lifts for use on ships at sea, it is not our intention herein to deal in a technical manner with this subject. Rather is it our desire that the reader should turn to the last

few pages of this book and glance through the lists of ships in which S.M.S. Lifts are installed. The ships therein enumerated are some of the finest ever built. In the case of the Steamships, etc., shown in the first list, many of these vessels have a universal reputation for comfort and all-round efficiency—the comfort is, perforce, less studied in the ships of the second list, but there is no question as to the efficiency.

SMS

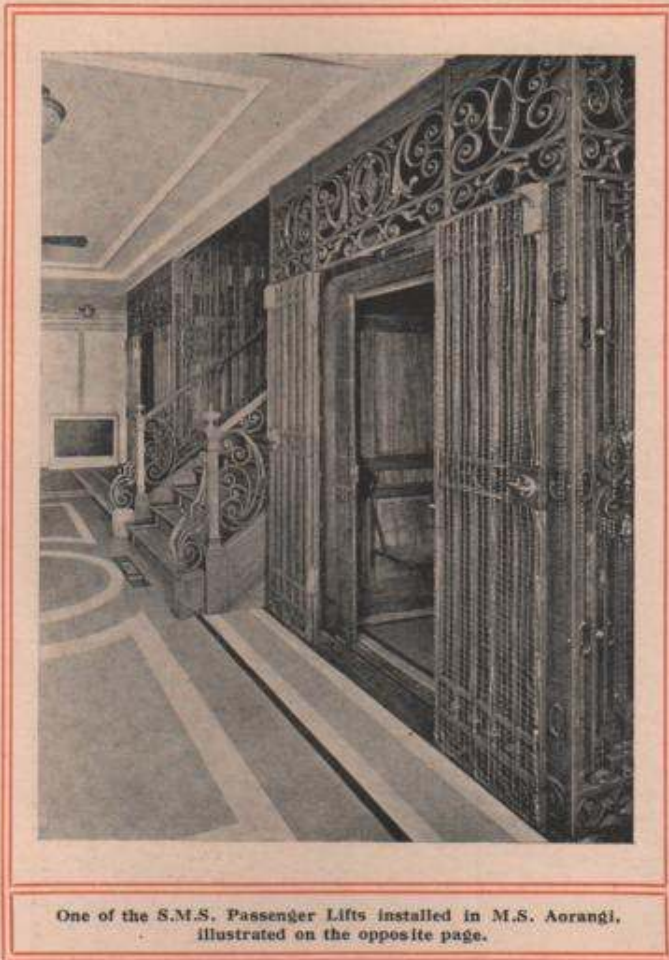
Because of the conditions of service, lifts installed on an ocean-going boat have to possess the quality of



H.M.S. HOOD.

This, the most powerful Battleship in the World, has 4 S.M.S. Ship Lifts installed. [Photograph by Frank & Sons, South Shields.]

reliability to a very marked degree. On land, if something goes amiss, it is usually an easy matter to get in touch with a lift engineer who can put things aright without delay, but at sea this specialised attention is not readily to hand.



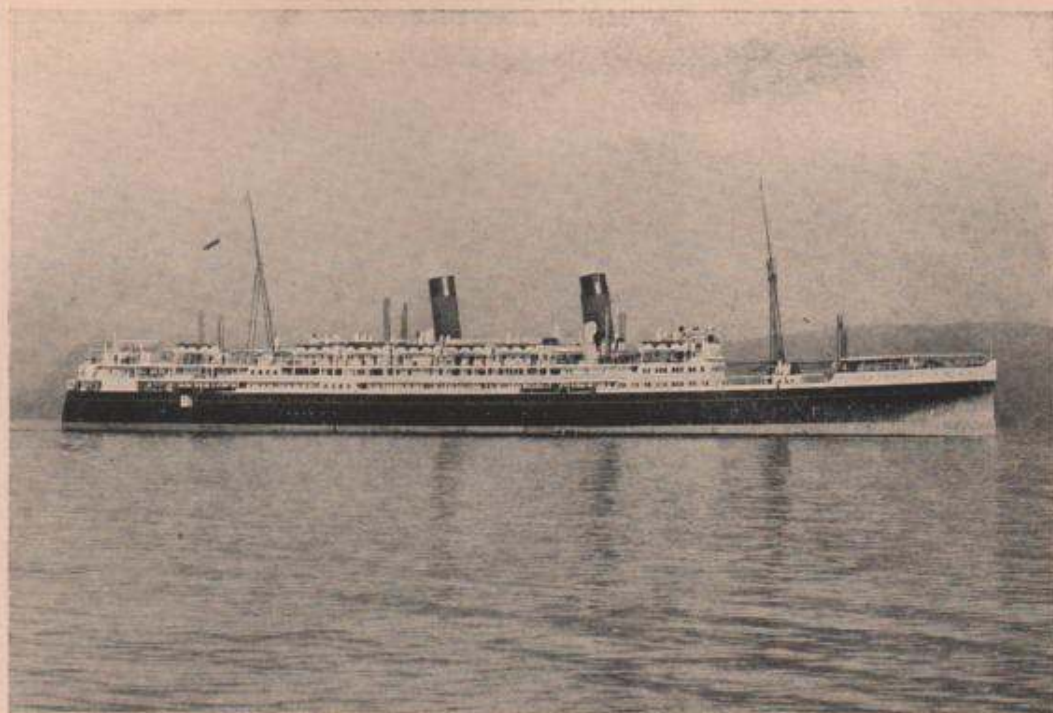
In the usual course of events, the ship engineers can make temporary repairs to put the lift back into commission again, but they are already sufficiently occupied with their normal routine and should, as a consequence, be relieved as much as possible from any additional work.

SMS

Beyond periodical lubrication, S.M.S. Lifts rarely call for any of the engineers' time, and it is because of their freedom from trouble that so many S.M.S. Lifts are in service afloat.

Those who have been unfortunate enough to have had the bitter experience will bear witness that, for sheer

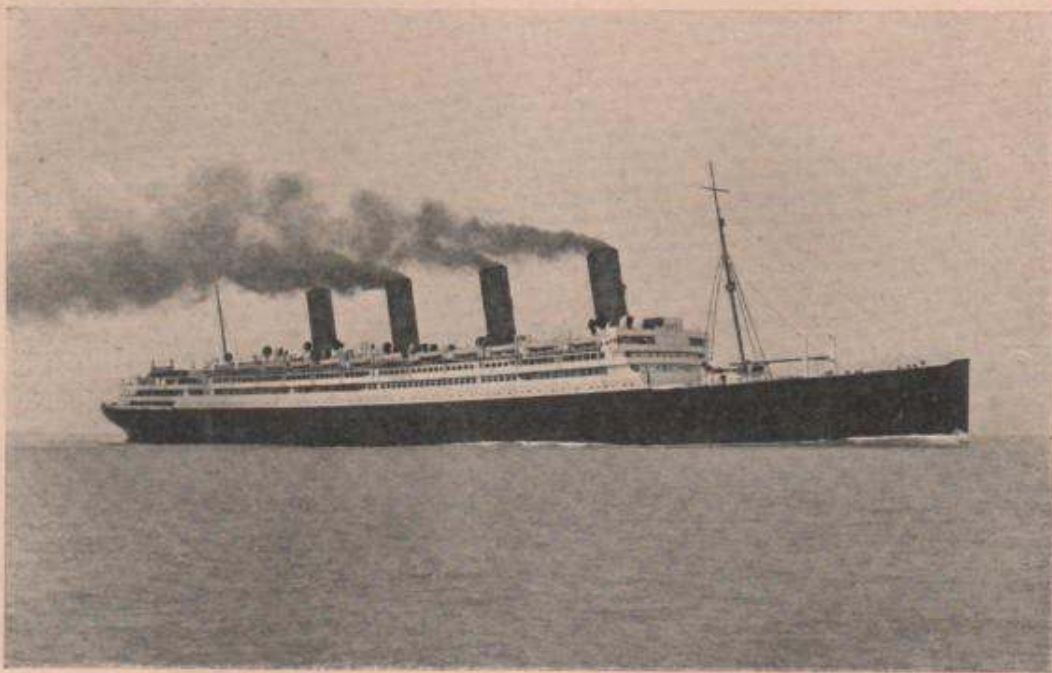
perversity, there are very few mechanical contrivances which can compare with an unreliable lift. It seems to resist all efforts to make it right, and as soon as one fault is adjusted some other part of the intricate mechanism is thrown out of gear. Let it be realized that in the simplest electric lift there are several hundreds of separate parts—many of them placed of necessity in rather inaccessible positions and some of a relatively delicate construction. Of a surety, there is no place on board a ship for any such potential source of trouble and annoyance. In the manufacture of S.M.S. Lifts meticulous attention is paid to *every*



M.S. AORANGI.

[This fine vessel contains 2 S.M.S. Passenger Lifts & 2 S.M.S. Baggage Cranes. [Photograph by Macure, Macdonald & Co., Glasgow.]

part. The most skilled lift engineers have for years specialised on the perfection of the winding engine and controls—good honest materials only are used. As a result, S.M.S. Lifts are not the lowest in price, but they are undeniably the most reliable lifts to instal. This reliability, of course, tells its tale in ultimate economy, as is evidenced by the following: Some time ago we compiled a record of all repair work executed by us for the thousands of S.M.S. Lifts installed. The average annual cost for repairs, including rope renewals, was £2 19s. per lift. Some of the machines had been in continual use for over ten years without any repair charges whatsoever.



S.S. AQUITANIA.
This famous Cunarder contains 10 S.M.S. Ship Lifts. [Photograph by Beken & Son, Coventry, I.W.]

S.M.S. Lifts have a world-wide reputation not only for unfaltering service but for absolute safety. The patented safety attachments are automatic and certain in action, needing no human action to put them into operation. On the very first hint of danger, be it but the undue stretching of a rope, the attachments function and the lift cage is held like a vice.

The recently introduced S. M. S. TRUE LEVEL Control Gear (which ensures that the lift stops accurately at the floor level irrespective of weight of load or skill of attendant) is the latest S.M.S. contribution to lift safety. This new gear is being extensively fitted, not only for new installations, but as an addition to existing lifts.

We feel assured that anyone perusing the following lists can come to but one conclusion regarding S.M.S. Ship Lifts and the reasons for the obvious preference given to them.



Two of the S.M.S. Ship Lifts in S.S. Aquitania.

LIST OF SHIPS

and particulars of **SMS** Lifts installed

Name of Ship.	Owners.	Shipbuilders.	Type of Lift.	Load.	Speed, ft. per min.	Control.
S.S. Orsova ..	Orient Line to Australia.	John Brown & Co., Ltd.	Passenger.	6 cwt.	120.	Switch.
S.S. Minnewaska	Atlantic Transport Co.	Harland and Wolff, Ltd.	Service.	56 lbs.	150.	2-button.
S.S. Orama ..	Orient Line to Australia.	John Brown & Co., Ltd.	Passenger.	6 cwt.	120.	Switch.
Ditto	Ditto.	Ditto.	Goods.	10 cwt.	88.	U.D.S.
T. S. S. Infanta Isabel de Bourbon	—	William Denny & Bros., Ltd.	Passenger.	9 cwt.	120.	Switch.
Reina Victoria Eugenia ..	—	Swan, Hunter & Wigham Richardson, Ltd.	Ditto.	9 cwt.	100.	Ditto.
S.S. Aquitania ..	Cunard Steamship Co., Ltd.	John Brown & Co., Ltd.	Ditto.	1,800 lbs.	150.	Ditto.
Ditto	Ditto.	Ditto.	Ditto.	Ditto.	Do.	Ditto.
Ditto	Ditto.	Ditto.	Ditto.	1,200 lbs.	Do.	Ditto.
Ditto	Ditto.	Ditto.	Ditto.	Ditto.	Do.	Ditto.
Ditto	Ditto.	Ditto.	Ditto.	Ditto.	Do.	Ditto.
Ditto	Ditto.	Ditto.	Baggage.	40 cwt.	100.	Ditto.
Ditto	Ditto.	Ditto.	Ditto.	Ditto.	Do.	Ditto.
Ditto	Ditto.	Ditto.	Stores.	20 cwt.	Do.	Ditto.
Ditto	Ditto.	Ditto.	Ditto.	Ditto.	Do.	Ditto.
Ditto	Ditto.	Ditto.	Service.	1,200 lbs.	150.	Ditto.
S.S. Ormonde ..	Orient Line to Australia.	Ditto.	Passenger.	6 cwt.	120.	Ditto.
S.S. Naldera ..	Peninsular and Oriental Steam Navigation Co.	Caird & Co., Ltd.	Ditto.	10 cwt.	Do.	Ditto.
Ditto	Ditto.	Ditto.	Ditto.	Ditto.	Do.	Ditto.
S.S. Yorkshire ..	Bibby Bros. & Co.	Harland and Wolff, Ltd.	Stores.	5 cwt.	Do.	U.D.S.

Name of Ship.	Owners.	Shipbuilders.	Type of Lift.	Load.	Speed, ft. per min.	Control.
S.S. Narkunda ..	Peninsular and Oriental Steam Navigation Co.	Harland and Wolff, Ltd.	Passenger.	10 cwt.	100.	Switch.
Ditto	Ditto.	Ditto.	Ditto.	Ditto.	Do.	Ditto.
S.S. Medura ..	—	Barclay, Curle & Co., Ltd.	Passenger and Stores.	3 cwt.	100.	U.D.S.
S.S. Mantola ..	British India Steam Navigation Co.	Ditto.	Ditto.	Ditto.	Do.	Ditto.
S.S. Mateana ..	Ditto.	Ditto.	Ditto.	Ditto.	Do.	Ditto.
S.S. Nalda ..	Ditto.	Ditto.	Ditto.	Ditto.	Do.	Ditto.
S.S. Arundel Castle	Union Castle Mail Steamship Co., Ltd.	Harland and Wolff, Ltd.	Passenger.	15 cwt.	100.	Switch.
S.S. Windsor Castle	Ditto.	Ditto.	Ditto.	Ditto.	Do.	Ditto.
S.S. Scythia ..	Cunard Steamship Co., Ltd.	Vickers, Ltd.	Goods.	10 cwt.	100.	Rope in cage.
Ditto	Ditto.	Ditto.	Passenger.	15 cwt.	150.	Switch.
Ditto	Ditto.	Ditto.	Ditto.	12 cwt.	150.	Ditto.
Conte Rosso ..	Lloyd Sabaudo Line.	William Beardmore & Co., Ltd.	Coal Hoist.	1 cwt.	100.	U.D.S.
Conte Verde ..	Ditto.	Ditto.	Ditto.	Ditto.	Do.	Ditto.
S.S. Moldavia	Peninsular and Oriental Steam Navigation Co.	Cammell Laird & Co., Ltd.	Service.	1 cwt.	100.	Ditto.
S.S. Mongolia ..	Ditto.	Sir W. G. Armstrong, Whitworth & Co., Ltd.	Ditto.	Ditto.	Do.	Ditto.
S.S. Volendam ..	Holland-America Line.	Harland and Wolff, Ltd.	2 Service Lifts.	3 cwt.	Do.	Ditto.
S.S. Veendam ..	Ditto.	Ditto.	Ditto.	Ditto.	Do.	Ditto.
S.S. Belgenland ..	Red Star Line.	Harland and Wolff, Ltd.	Passenger.	10 cwt.	100.	Switch.
Ditto	Ditto.	—	Ditto.	Ditto.	Do.	Ditto.
Ditto	Ditto.	—	Ditto.	Ditto.	Do.	Ditto.
Ditto	Ditto.	—	Goods.	5 cwt.	Do.	U.D.S. from loadings.
Ditto	Ditto.	—	Service.	56 lbs.	Do.	Ditto.
Ditto	Ditto.	—	Ditto.	Ditto.	Do.	Ditto.

Name of Ship.	Owners.	Shipbuilders.	Type of Lift.	Load.	Speed, ft. per min.	Control.
S.S. Arcadian ..	Royal Mail Steam Pkt. Co.	Harland and Wolff, Ltd.	Goods.	5 cwt.	100.	U.D.S. from loadings. U.D.S.
S.S. Cuba ..	Compagnie Générale Transatlantique Ltd.	Swan, Hunter and Wigham Richardson, Ltd.	Service.	1 cwt.	Do.	U.D.S.
Ditto	Ditto.	Ditto.	Ditto.	Ditto.	Do.	Ditto.
S.S. Minnewaska	Atlantic Transport Co.	Harland and Wolff, Ltd.	Service.	56 lbs.	Do.	Ditto.
S.S. Aorangi ..	Union Steamship Co. of New Zealand, Ltd.	Fairfield Shipbuilding and Engineering Co., Ltd.	Passenger.	9 cwt.	120.	Switch.
Ditto	Ditto.	Ditto.	Ditto.	Ditto.	Do.	Ditto.
Ditto	Ditto.	Ditto.	Engineers.	5 cwt.	100.	U.D.S.
S.S. Mongolia ..	Peninsular and Oriental Steam Navigation Co.	Sir W. G. Armstrong, Whitworth & Co., Ltd.	Ditto.	2 cwt.	Do.	Ditto.
S.S. Moldavia ..	Ditto.	R. & H. Green and Silley Weir, Ltd.	Ditto.	4½ cwt.	Do.	Ditto.
S.S. Oronsay ..	Orient Line to Australia.	John Brown & Co., Ltd.	Passenger.	10 cwt.	Do.	Switch.
S.S. Orama ..	Ditto.	Vickers, Ltd.	Ditto.	6 cwt.	120.	Ditto.
S.S. Minnetonka	Atlantic Transport Co.	Harland and Wolff, Ltd.	Service.	56 lbs.	100.	U.D.S.
S.S. Gripsholm ..	Swedish American Line.	Sir W. G. Armstrong, Whitworth & Co., Ltd.	Engineers.	10 cwt.	Do.	F.A.P.B.
Ditto	Ditto.	Ditto.	Stores.	Ditto.	Do.	Ditto.
Ditto	Ditto.	Ditto.	Pantry Goods.	5 cwt.	Do.	U.D.S.
Ditto	Ditto.	Ditto.	Pantry Service.	1 cwt.	Do.	F.A.P.B.
Ditto	Ditto.	Ditto.	Passenger.	10 cwt.	Do.	Ditto.
S.S. Ranpura ..	Peninsular and Oriental Steam Navigation Co.	R. & W. Hawthorn, Leslie & Co., Ltd.	Ditto.	Ditto.	Do.	Switch.
Ditto	Ditto.	Ditto.	Engineers.	7½ cwt.	Do.	F.A.P.B.
Ditto	Ditto.	Ditto.	Pantry Service.	1 cwt.	100.	Ditto.
S.S. Ranchi ..	Ditto.	Ditto.	Passenger.	10 cwt.	Do.	Switch.

Name of Ship.	Owners.	Shipbuilders.	Type of Lift.	Load.	Speed, ft. per min.	Control.
S.S. Ranchi ..	Peninsular and Oriental Steam Navigation Co.	R. & W. Hawthorn, Leslie & Co., Ltd.	Engineers.	7½ cwt.	100.	F.A.P.B.
Ditto ..	Ditto.	Ditto.	Pantry Service.	1 cwt.	Do.	Ditto.
S.S. Razmak ..	Ditto.	Harland and Wolff, Ltd.	Engineers.	4 cwt.	105.	U.D.S.
Ditto ..	Ditto.	Ditto.	Pantry Service.	1 cwt.	120.	F.A.P.B.
Ditto ..	Ditto.	Ditto.	Ditto.	Ditto.	Do.	Ditto.
S.S. Carinthia ..	Cunard Steam-Ship Co. Ltd.,	Vickers, Ltd.	Passenger.	15 cwt.	152.	Switch.
Ditto ..	Ditto.	Ditto.	2nd Class Passenger.	12 cwt.	142.	Ditto.
Ditto ..	Ditto.	Ditto.	Goods.	10 cwt.	106.	Hand rope in cage.
S.S. Cathay ..	Peninsular and Oriental Steam Navigation Co.	Barclay, Curle & Co., Ltd.	Engineers.	4 cwt.	107.	F.A.P.B.
Ditto ..	Ditto.	Ditto.	Pantry.	1 cwt.	128.	Ditto.
S.S. Comorin ..	Ditto.	Ditto.	Engineers.	4 cwt.	107.	Ditto.
Ditto ..	Ditto.	Ditto.	Pantry.	1 cwt.	128.	Ditto.
S.S. Rawalpindi ..	Ditto.	Harland and Wolff, Ltd.	Passenger.	10 cwt.	100.	Switch.
Ditto ..	Ditto.	Ditto.	Pantry.	1 cwt.	121.	F.A.P.B.
Ditto ..	Ditto.	Ditto.	Engineers.	4 cwt.	103.	U.D.S.
S.S. Rajputana ..	Ditto.	Ditto.	Passenger.	10 cwt.	100.	Switch.
Ditto ..	Ditto.	Ditto.	Pantry.	1 cwt.	121.	F.A.P.B.
Ditto ..	Ditto.	Ditto.	Engineers.	4 cwt.	103.	U.D.S.
S.S. Chitral ..	Ditto.	Alex. Stephen & Sons, Ltd.	Ditto.	Ditto.	107.	F.A.P.B.
Ditto ..	Ditto.	Ditto.	Pantry.	1 cwt.	128.	Ditto.
M.S. Aorangi ..	Union Steamship Co. of New Zealand, Ltd.	Fairfield Shipbuilding and Engineering Co., Ltd.	Electric Cranes.	5 cwt.	90.	Tramcar Type. (Allen West.)
M.V. Asturias ..	Royal Mail Steam Packet Co.	Harland and Wolff, Ltd.	Passenger.	10 cwt.	100.	Switch.
Ditto ..	Ditto.	Ditto.	Stewards' Passenger.	Ditto.	Do.	Ditto.
Ditto ..	Ditto.	Ditto.	Stores.	5 cwt.	Do.	Ditto.

Name of Ship.	Owners.	Shipbuilders.	Type of Lift.	Load.	Speed, ft. per min.	Control.
S.S. Asturias ..	Royal Mail Steam Pkt. Co.	Harland and Wolff, Ltd.	Stores.	5 cwt.	100.	Switch.
Ditto	Ditto.	Ditto.	Pantry Service.	56 lbs.	Do.	F.A.P.B.
Ditto	Ditto.	Ditto.	Ditto.	Ditto.	Do.	Ditto.
Ditto	Ditto.	Ditto.	Ditto.	Ditto.	Do.	Ditto.
S.S. Conte Biancamono.	—	William Beardmore & Co., Ltd.	Coal Hoist.	1 cwt.	Do.	U.D.S.
T.S.S. Otranto ..	Orient Line to Australia.	Vickers, Ltd.	Passenger.	6 cwt.	120.	Switch.
S.S. Carnarvon Castle.	Union - Castle Mail Steamship Co., Ltd.	Harland and Wolff, Ltd.	Ditto.	10 cwt.	98.	Ditto.
Ditto	Ditto.	Ditto.	Pantry.	56 lbs.	97.	U.D.S.
Ditto	Ditto.	Ditto.	Engineers.	3 cwt.	100.	Ditto.
M.V. Alcantara ..	Royal Mail Steam Pkt. Co.	Ditto.	Passenger.	10 cwt.	Do.	Switch.
Ditto	Ditto.	Ditto.	Stewards' Passenger.	Ditto.	Do.	Ditto.
Ditto	Ditto.	Ditto.	Pantry Service.	56 lbs.	Do.	F.A.P.B.
Ditto	Ditto.	Ditto.	Ditto.	Ditto.	Do.	Ditto.
Ditto	Ditto.	Ditto.	Ditto.	Ditto.	Do.	F.A.P.B.
T.S.S. Orford ..	Orient Line to Australia.	Vickers, Ltd.	Passenger.	6 cwt.	120.	Switch.
T.S.S. Rajula ..	British India Steam Navigation Co.	Barclay, Curle & Co., Ltd.	Engineers.	3 cwt.	100.	U.D.S.
T.S.S. Ronha ..	Ditto.	R. & W. Hawthorn, Leslie & Co., Ltd.	Ditto.	Ditto.	Do.	Ditto.
T.S.S. Orontes ..	Orient Line to Australia.	Vickers, Armstrongs, Ltd.	Passenger.	6 cwt.	120.	Switch.

H.M. BATTLESHIPS

and particulars of **SMS** Lifts installed

Name of Boat.	Shipyard.	Load.	Type of Lift.
H.M.S. Neptune.	—	4-3 cwt.	Passenger.
Monarch.	—	6-3 cwt.	Ditto.
Conqueror.	—	Ditto.	Ditto.
Thunderer.	—	Ditto.	Ditto.
Orion.	H.M. Dockyard, Portsmouth.	Ditto.	Ditto.
Ajax.	Scott's Shipbuilding & Engineering Co., Ltd., Greenock.	6-5 cwt.	Ditto.
Iron Duke.	H.M. Dockyard, Portsmouth.	Ditto.	Ditto.
Marlborough.	Ditto Devonport.	Ditto.	Ditto.
Benbow.	W. Beardmore & Co., Ltd., Dalmuir.	Ditto.	Ditto.
Queen Elizabeth.	H.M. Dockyard, Portsmouth.	7-5 cwt.	Ditto.
Warspite.	Ditto Devonport.	Ditto.	Ditto.
Valiant.	Fairfield Shipbuilding & Engineering Co., Ltd., Govan.	Ditto.	Ditto.
Barham.	John Brown & Co., Clydebank.	Ditto.	Ditto.
Malaya.	Sir W. G. Armstrong, Whitworth, Ltd., Walker-on-Tyne.	Ditto.	Ditto.
Resolution.	Palmer's Shipbuilding Co., Ltd., Hebburn-on-Tyne.	6-5 cwt.	Ditto.
Royal Sovereign.	H.M. Dockyard, Portsmouth.	Ditto.	Ditto.
Royal Oak.	Ditto Devonport.	Ditto.	Ditto.
Ramillies.	W. Beardmore & Co., Ltd., Dalmuir.	Ditto.	Ditto.
Renown.	Fairfield Shipbuilding & Engineering Co., Ltd., Govan	8-5 cwt.	Ditto.
Repulse.	John Brown & Co., Clydebank.	Ditto.	Ditto.
Courageous.	Sir W. G. Armstrong, Whitworth, Ltd., Walker-on-Tyne.	7-5 cwt.	Ditto.
Furious.	Ditto.	Ditto.	Ditto.
Glorious.	Harland and Wolff, Ltd., Belfast.	Ditto.	Ditto.
Hood.	H.M. Dockyard, Clyde.	4-5 cwt.	Ditto.
Eagle.	Ditto Portsmouth.	2-2,000 lbs.	Bomb.
Eagle.	Ditto Ditto.	2,000 lbs.	Petrol.
Hermes.	Ditto Devonport.	2-10 cwt.	Bomb.
Hermes.	Ditto Ditto.	11 cwt.	Petrol.
Queen Elizabeth.	Ditto Portsmouth.	1-2 ton.	Shell lift.
Canada.	Ditto Ditto.	8-5 cwt.	Passenger.

Smith, Major & Stevens, Ltd.

LIFT ENGINEERS



Head Office and Main Works :

ABBEY WORKS, NORTHAMPTON

Telephone : 810 Northampton (2 lines).

Telegrams : "Gudelyft, Northampton."

London Office and Works :

"JANUS WORKS," BOLAN STREET, BATTERSEA BRIDGE ROAD, LONDON, S.W.11.

Telephone : Battersea 1856 (2 lines).

Telegrams : "Gudelyft, London."

Branches :

NORTON STREET, GREENGATE, SALFORD,
MANCHESTER.
Telephone : City 6684. Telegrams : "Gudelyft, Manchester."
14 LOWER PRIORY, BIRMINGHAM.
Telephone : Central 1415. Telegrams : "Gudelyft, Birmingham."
1 FOSTER PLACE, COLLEGE GREEN, DUBLIN.
Telephone : 649. Telegrams : "Converter, Dublin."
137 ROYAL AVENUE, BELFAST.
Telephone : 348. Telegrams : "Mechanical, Belfast."
33 LATTICE AVENUE, IPSWICH.
Telephone : 2759. Telegrams : "Gudelyft, Ipswich."
27 PARK CROSS STREET, LEEDS.
Telephone : Leeds 28414. Telegrams : "Gudelyft, Leeds."

21 SAVILLE CHAMBERS, NORTH STREET,
NEWCASTLE-ON-TYNE.
Telephone : Central 3282.
Telegrams : "Gudelyft, Newcastle-on-Tyne."
11 BOTHWELL STREET, GLASGOW, C.2.
Telephone : Central 6127. Telegrams : "Gudelyft, Glasgow."
59 ROSE STREET, EDINBURGH.
Telephone : 26764. Telegrams : "Gudelyft, Edinburgh."
58a QUEEN STREET, CARDIFF.
Telephone : 1003. Telegrams : "Gudelyft, Cardiff."
1 HUSTLERGATE, BRADFORD.
Telephone : 1641. Telegrams : "Gudelyft, Bradford."

Service Agents :

Messrs. BATTERBY & HEFFORD,
77a Siddala Road, Derby.
Telephone : 1035.
MR. CHAS. LYE,
11 Northernhay Place, Exeter.
Telephone : 994. Telegrams : "Lye, Exeter."

Messrs. A. T. WELLS & CO.,
47 London Road, Southampton.
Telephone : 3717.
Messrs. LORD & SHAND, LTD.,
08-99 Union Street, Plymouth.
Telephone : 588. Telegrams : "Ohm, Plymouth."

Messrs. H. W. BEDFORD & SONS,
28 St. George's Road, Kemp Town, Brighton.
Telephone : 3781.

Overseas Agents :

Australia—

Messrs. MAJOR, STEVENS & COATES, LTD.,
Challis House, Martin Place, Sydney,
New South Wales.
Messrs. MAJOR, STEVENS & COATES, LTD.,
Exton House, Queen Street, Brisbane, Queensland.
Messrs. CROSSLE, SCOTT & DUFF,
Collins House, 360 Collins Street,
Melbourne, Victoria.
Messrs. W. CHAS. WHITEHILL,
Ranelagh Street (off Waymouth Street),
Adelaide, South Australia.

New Zealand—

Messrs. H. MOULT, LTD.,
272 Willis Street, Wellington.
THE ELECTRIC CONSTRUCTION CO.,
Electric House, 52 Fort Street, Auckland.

India and Burma—

Messrs. JESSOP & CO., LTD.,
93 Clive Street, Calcutta, and Branches.

South Africa—

Messrs. KITSON (SOUTH AFRICA), LTD.
35a Bree Street, Capetown.

China—

Messrs. SCOTT, HARDING & CO., LTD.,
35 Peking Road, Shanghai.
Messrs. SHEWAN TOMES & CO.,
Hongkong.

Straits Settlements—

Messrs. UNITED ENGINEERS, LTD.,
13 Battery Road, Singapore.

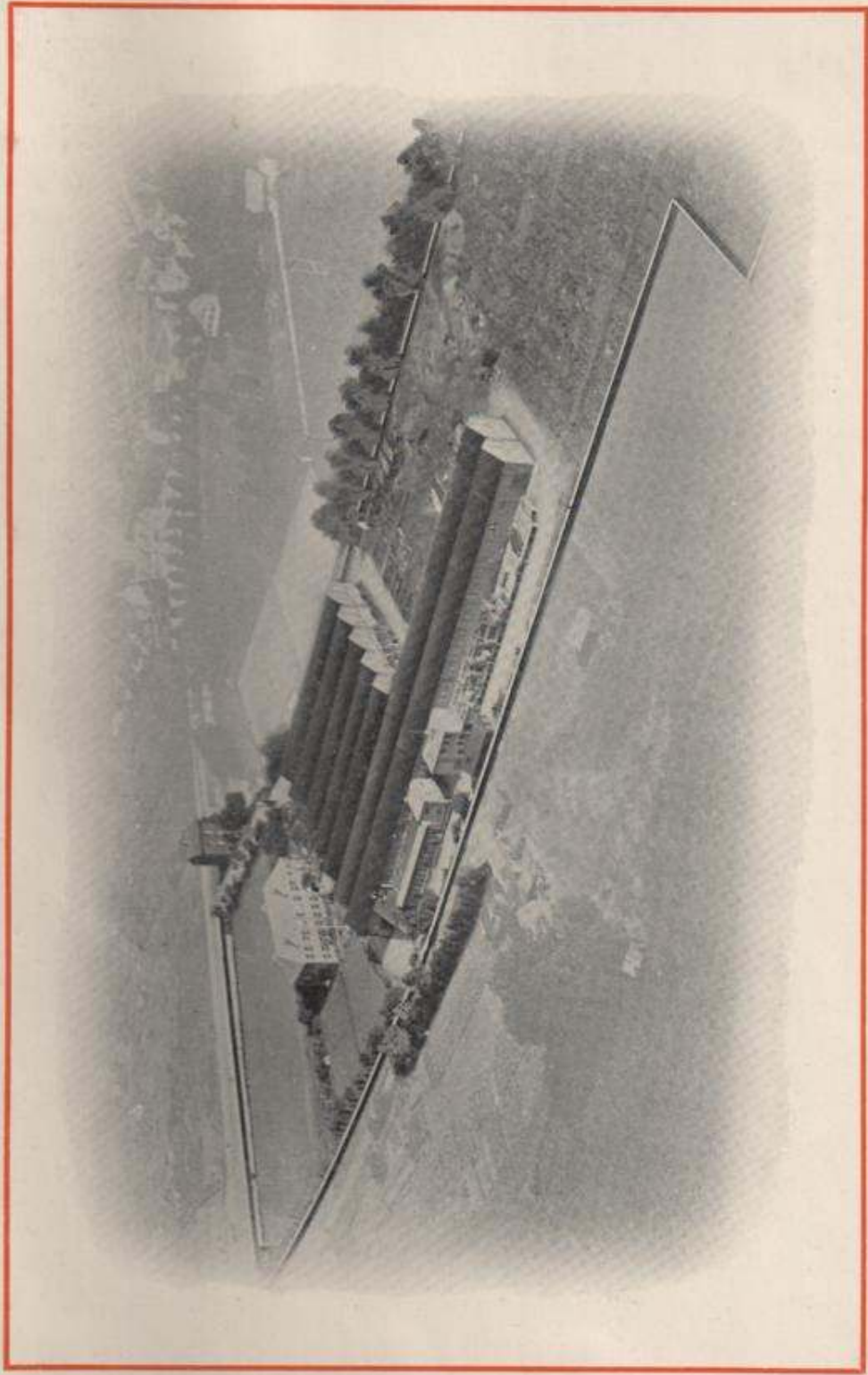
Ceylon—

Messrs. BROWN & CO.,
Lanka Works, Darley Road, Colombo.

Codes :

A.B.C. (5th Edn.) Lieber's. Western Union. Marconi. Private.

ON ADMIRALTY, WAR OFFICE AND HIS MAJESTY'S OFFICE OF WORKS LISTS.



*Abbey Works, Northampton,
where the famous S.M.S. Lifts
are made.*