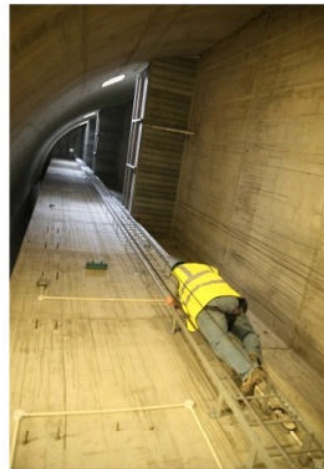
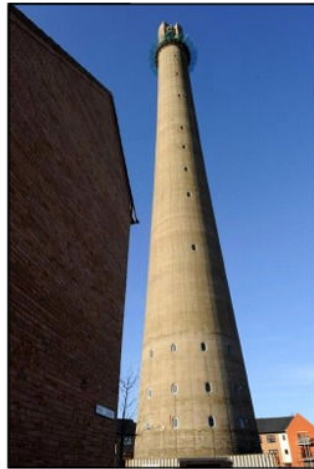
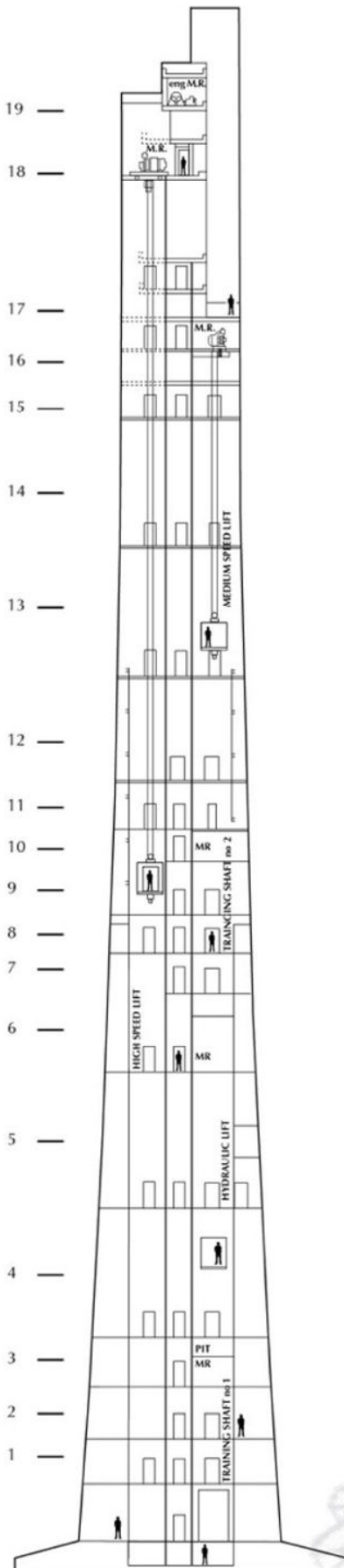


# The National Lift Tower



The National Lift Tower is a 127m (418ft) research and development facility located in Northampton, England.

Originally built to test lifts, the scope of work undertaken at the tower has increased considerably in recent years. The height of the building and its unique features make it an invaluable resource. Ongoing projects include work in the following areas ...

- Height safety, rescue and access equipment
- Escape systems for offshore platforms and vessels
- Novel systems for underwater crange
- Lift engineer training
- Lift equipment development and marketing
- Charity abseils
- World's tallest drainage test facility
- Drop testing and experiments for various sectors including nuclear and space
- Wireless provision of long range high speed internet access

There are six lift shafts of varying heights and speeds, one of which is a high speed shaft with a travel of 100m and a theoretical maximum speed of 10m/s. Aside from the lift shafts, there are a number of other vertical spaces inside the building which have been used for a variety of projects. The tallest of these is 93 metres and is equipped with a sophisticated camera system that can be used to track experiments in realtime.

The drop test shaft is 30m tall with a 10Te hoist and an electric cradle for installation and inspection of the components being tested.

We have in-house experts who are able to undertake development projects or research. We also have a fully equipped and staffed workshop for light engineering tasks.

In partnership with Taylor Lifts, we offer an expanding range of training courses for lift engineers, including first aid. These courses have both classroom based and hands-on elements, making them unique in the lift industry.

The tower has excellent transport links being situated next to the M1, having three international airports within one hour's drive and with a local train station on the main line to Euston.

The National Lift Tower  
Northampton  
England  
NN5 5FH  
Email : [enquiries@nationallifttower.co.uk](mailto:enquiries@nationallifttower.co.uk)  
Tel : 01604 587745  
Website : <http://www.nationallifttower.co.uk>